



Work with IT Thought  
Leaders and leading  
edge products.

**“Our mission is to serve  
our customers by  
anticipating their needs  
and outrunning their vision  
with innovative technology  
solutions and staffing  
services.”**

**[www. ceesl.com](http://www.ceesl.com)**



### **CEE Corporation IT Solutions**

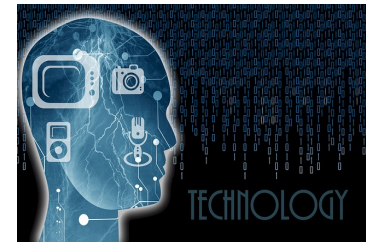
11250 Roger Bacon Dr.  
Building #15  
Reston, VA 20190

Tel: (202) 827-5707  
(571) 526-4447  
(571) 526-4432  
Fax: (571) 526- 4432

Website: [www.ceesl.com](http://www.ceesl.com)

Email: [info@ceesl.com](mailto:info@ceesl.com)

## **CEE Corporation IT Solutions**



## **Staffing Services**



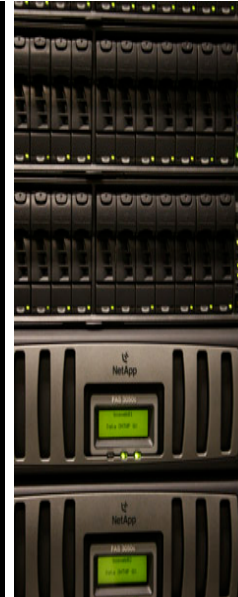


---

## Staffing Competencies

- Sr. IT engineering talent
- Network Specialists - Certified professionals
- IT specialties – Architecture, Network, Security, SDN, Open Source Architecture, PMO, Financial Management, Governance
- Hard to find specialists – Let us do the leg work for you!
- Cee Corporation Staffing service is the answer for your staffing needs

- Do you have a gap in IT services?
- Will your IT scale at a cost you can afford?
- Need security help for cloud apps?
- If your answer is no, call us for a free consultation!



---

## Acquire the resource skills needed to define and support the architecture, hardware and software of the future

- SDN, Networking
- Security, Encryption, Cyber Security
- Open Source: Linux, Redhat, Open Stack
- Cloud, Web Services – AWS, Azure

---

## Personalized Service

Augment, increase capacity or locate specialized talent for those special needs projects effortlessly.

Satisfaction guaranteed.

CEE provides dedicated account management designed to anticipate your needs and the timely provision of resources to meet those needs.

---

## Our Staffing Services

- Staff augmentation: Short term, long term, temp to perm
- Direct hire placements available
- Retained searches

---

## Our Technology Partners

- Cisco, Amazon Web Services (AWS), Microsoft Azure, IBM, Open Stack, Citrix, VMware, EMC, Dell, NetApp, RackSpace and more